



Seavus Project Viewer 4.0

The complete viewer for Microsoft® Project files

Concurrent Version - Installation Instructions

SEAVUS PROJECT VIEWER

CONCURRENT VERSION INSTALLATION INSTRUCTIONS

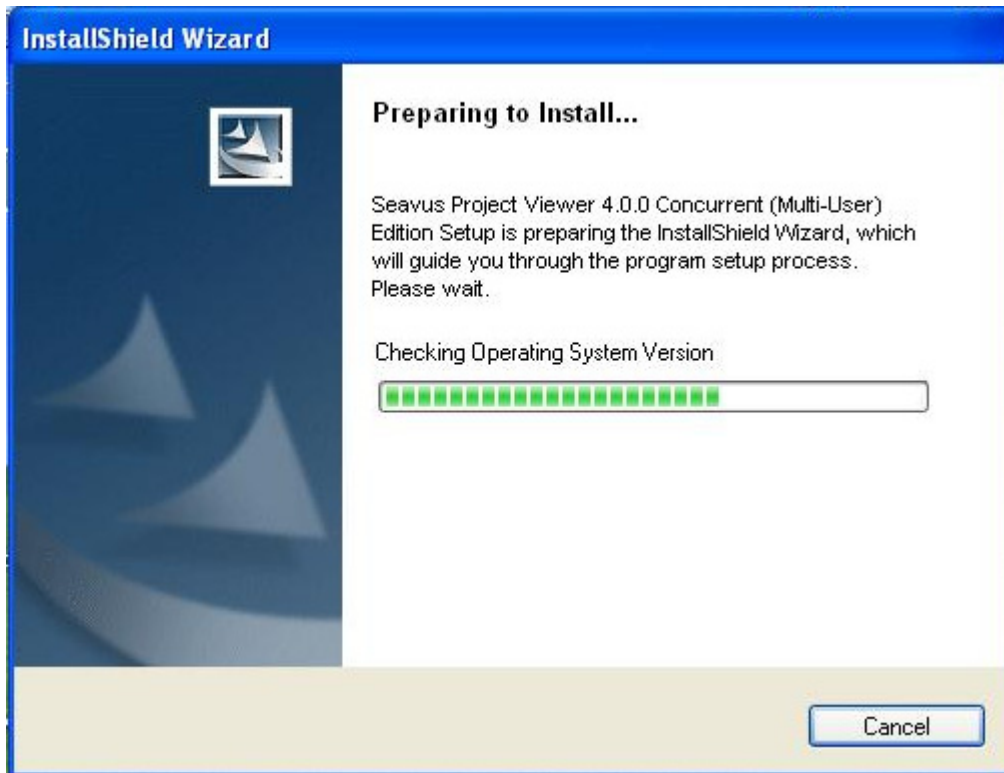
TO INSTALL THE CONCURRENT VERSION OF SEAVUS PROJECT VIEWER:

After you have downloaded the setup, start the installation by double-clicking the setup file in Windows Explorer or use the "Run" command from the Start menu.

Note: Before you start the setup, you should check the section "System Requirements" in the "User Manual" document for information about the minimal hardware and software configuration required to run the product.

STEP 1) SETUP INITIALIZATION:

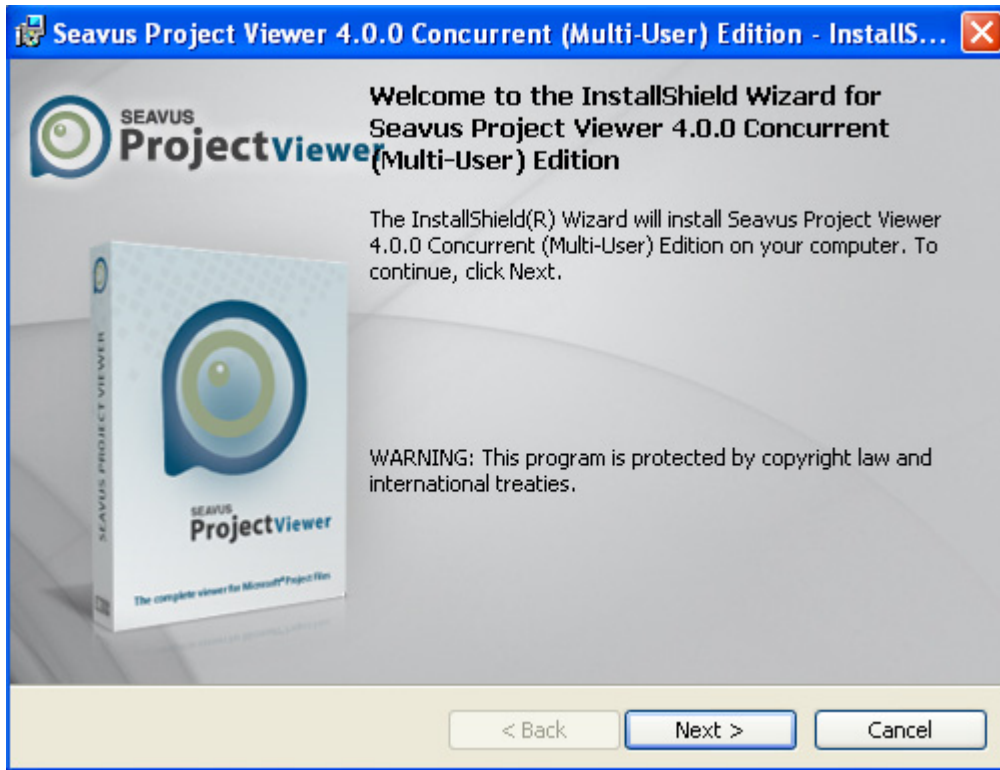
Once the setup is initialized and the initialization dialog appears; the Setup wizard will automatically continue with the installation.



Note: Click the Cancel button if you wish to exit the installation

STEP 2) SETUP WELCOME:

After the initial preparations for installation, the setup wizard will show you the Welcome dialogue. You should click the Next button if you want to continue with the Setup, or Cancel if you want to exit the wizard.

**STEP 3) LICENSE AGREEMENT:**

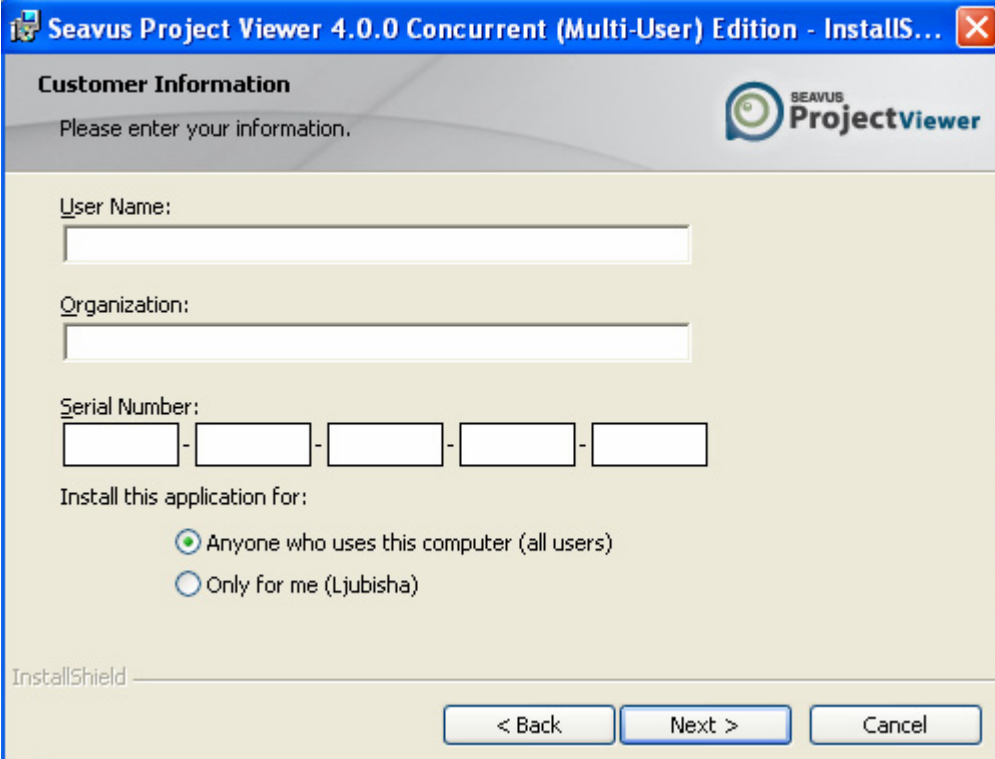
The license agreement shows the End User License Agreement for the product. Please read it carefully, and click the "I accept the terms" in the license agreement radio button. Click the Next button if you agree with the License agreement and want to continue with the Setup; or click the Cancel button if you disagree with the License agreement and want to exit the installation wizard.



STEP 4) CUSTOMER INFORMATION:

Concurrent Version - Installation Instructions

This dialog box collects the information about the user who performs the installation, and the license key information which consists of two parts Organization and Serial Number. You must insert the correct serial number if you want to continue the Setup, otherwise you will not be allowed to install the product on your computer / server.



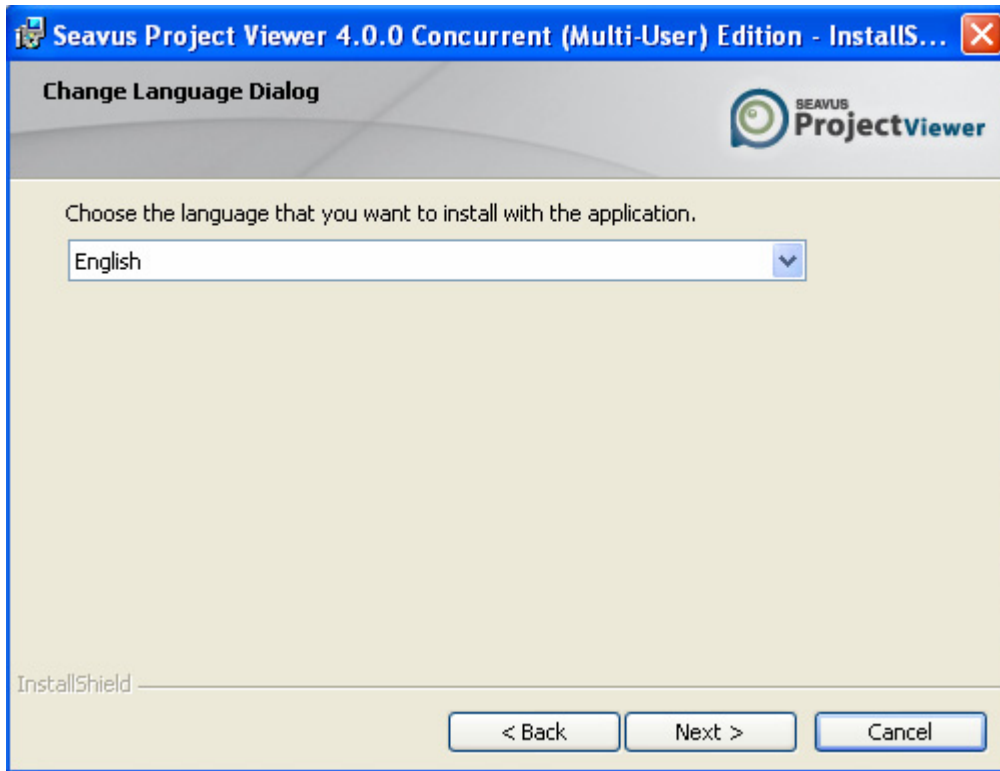
The image shows a Windows-style dialog box titled "Seavus Project Viewer 4.0.0 Concurrent (Multi-User) Edition - InstallS...". The dialog has a blue title bar with a close button. The main content area is light beige and contains the following elements:

- Customer Information** header with the instruction "Please enter your information." and the Seavus Project Viewer logo.
- User Name:** A single-line text input field.
- Organization:** A single-line text input field.
- Serial Number:** Five individual text input boxes separated by hyphens, representing a five-digit serial number.
- Install this application for:** Two radio button options:
 - Anyone who uses this computer (all users)
 - Only for me (Ljubisha)
- InstallShield** text at the bottom left.
- Three buttons at the bottom: "< Back", "Next >", and "Cancel".

STEP 5) LANGUAGE DIALOG:

Concurrent Version - Installation Instructions

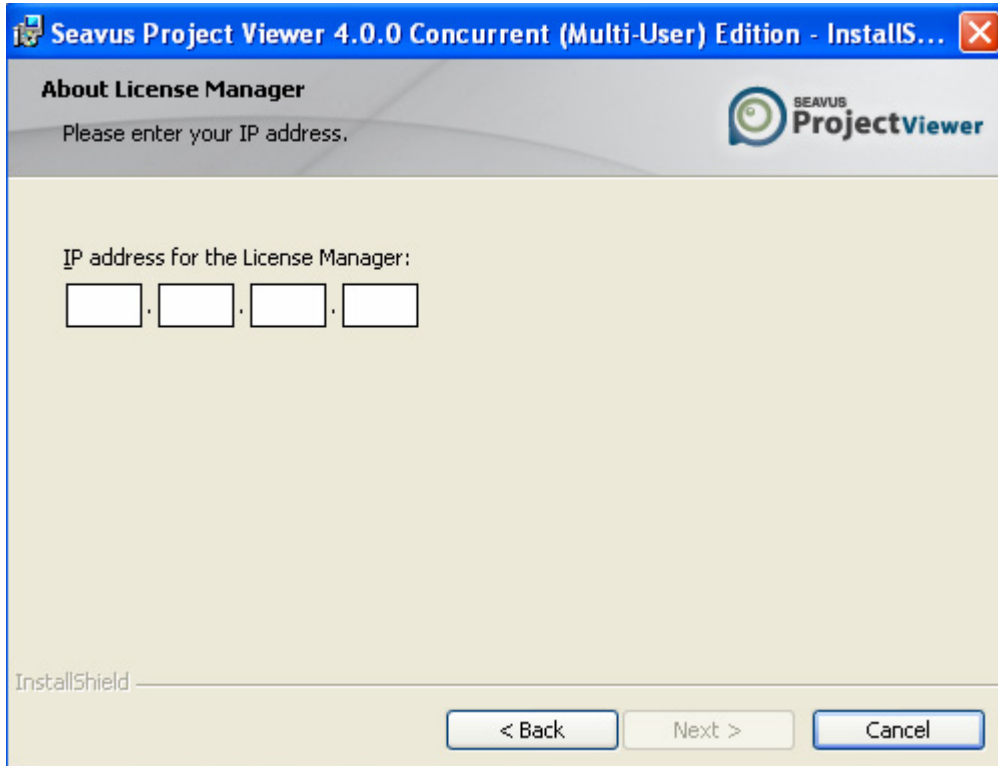
This dialog box allows you to select which language Seavus Project Viewer will be installed on your PC. You may install Seavus Project Viewer in the following languages: English, German, French and Spanish.



STEP 6) IP ADDRESS FOR LICENSE MANAGER:

Concurrent Version - Installation Instructions

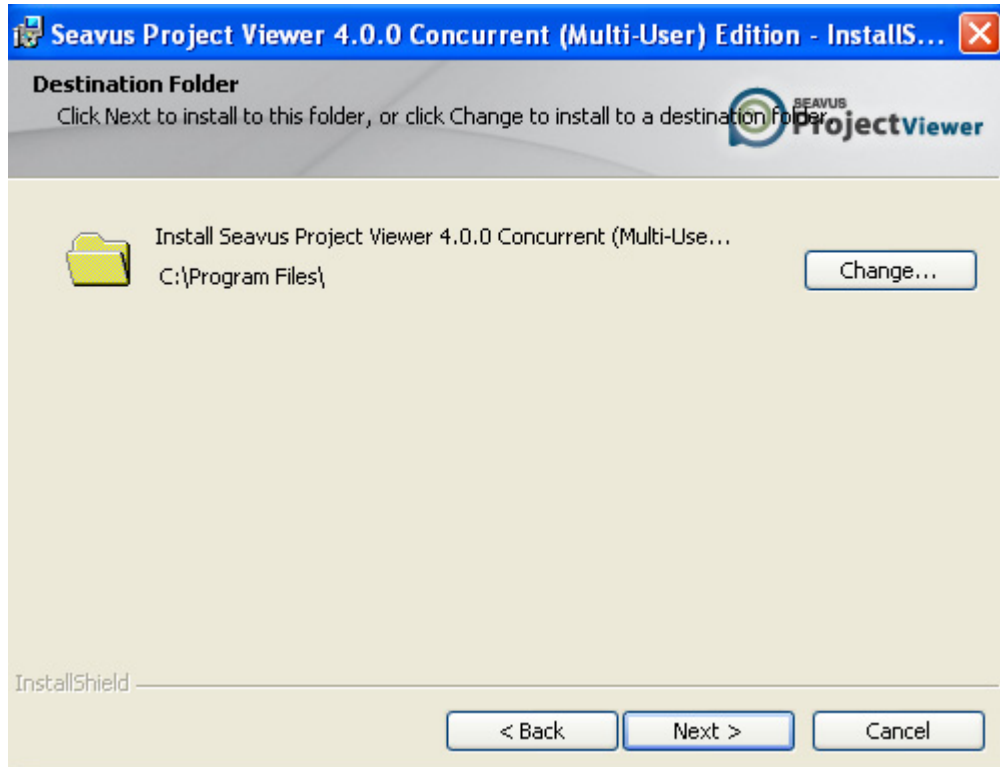
After selecting the language for Seavus Project Viewer, you will need to enter the computer's IP address, on which the application is installed. In case you don't know the IP address, click on the Start button and select the Run option. In the Run window, type cmd and click on the Ok button. Inside the Command Prompt window type ipconfig and you will be able to view the computer's IP address.



STEP 7) SETUP TYPE:

Concurrent Version - Installation Instructions

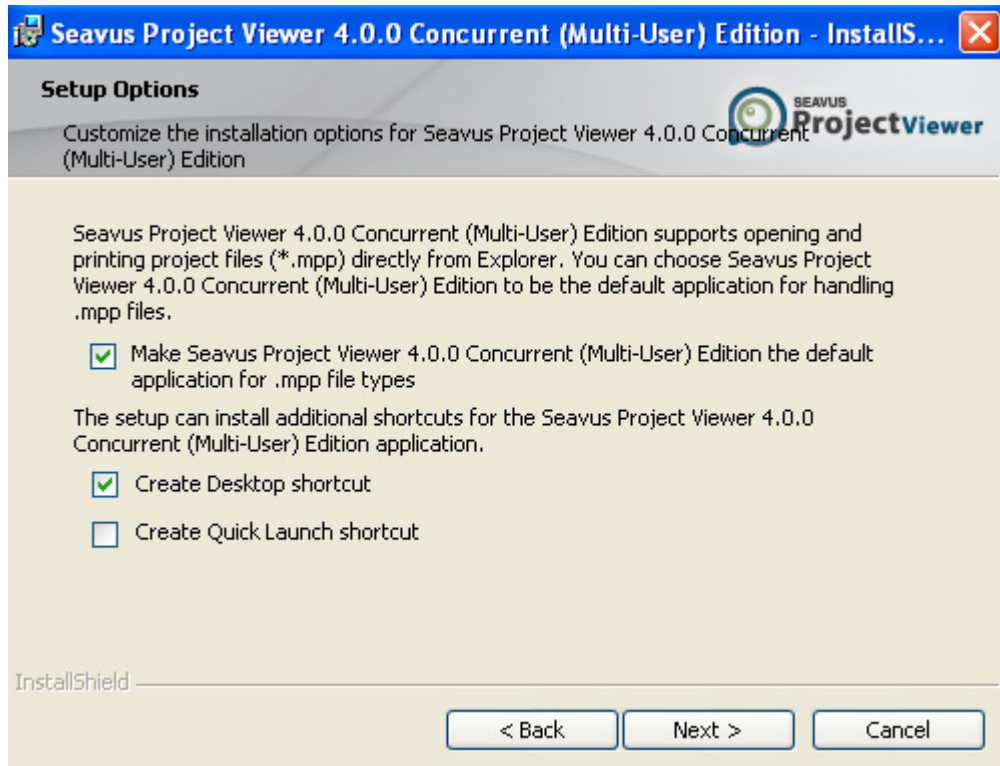
Seavus Project Viewer, by default, is installed on *C:\Programs Files* inside the Seavus folder. You may select the drive where you want to install the application, by selecting the Change button and entering the appropriate location.



STEP 8) SETUP TYPE:

Concurrent Version - Installation Instructions

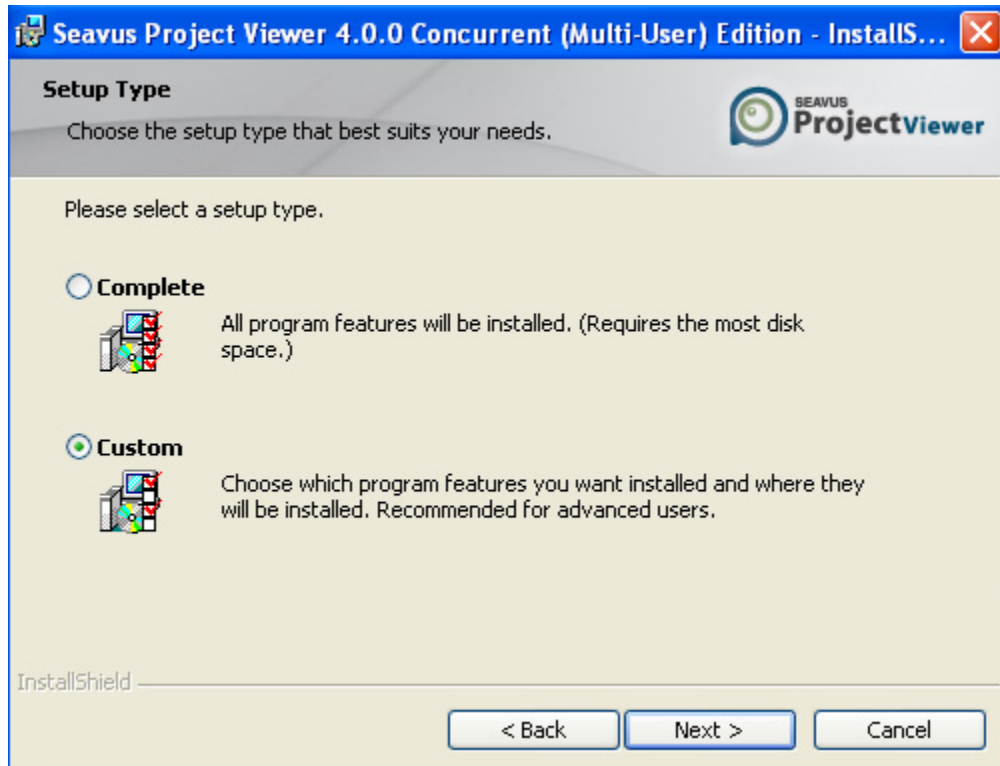
Select if Seavus Project Viewer will be the default application for opening .mpp files, and which shortcuts should be placed for the application.



STEP 9) SETUP TYPE:





Concurrent Version - Installation Instructions

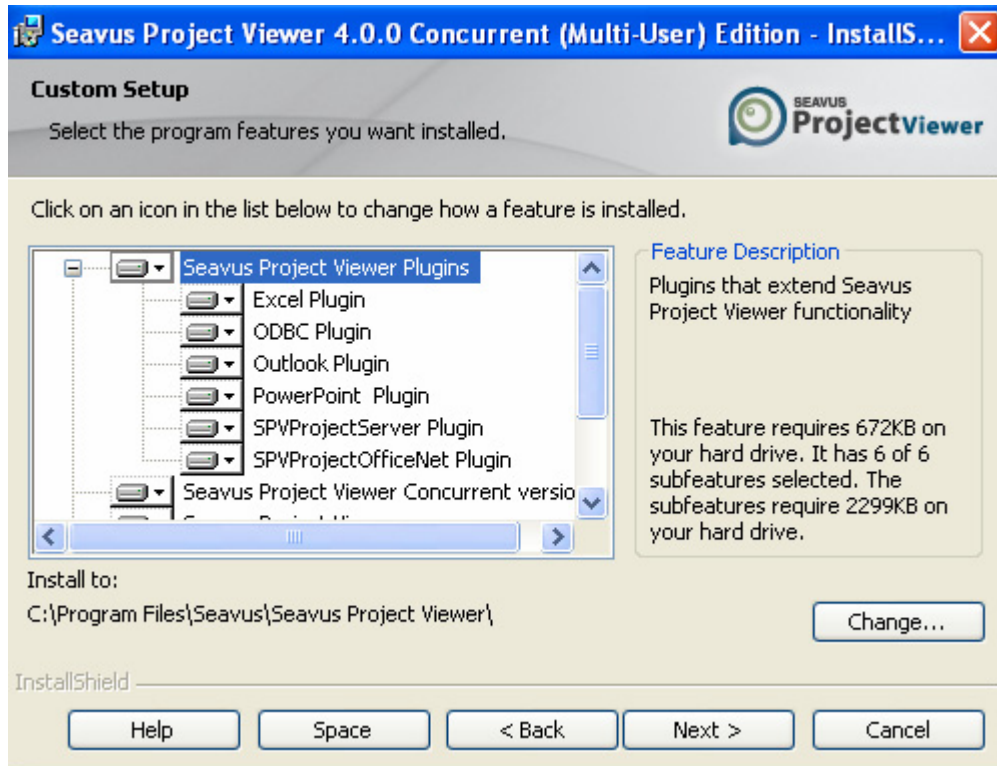
Select the Custom type of installation, which gives you an opportunity to choose where the product will be installed and which components will be installed.



STEP 10) SETUP TYPE:

Concurrent Version - Installation Instructions

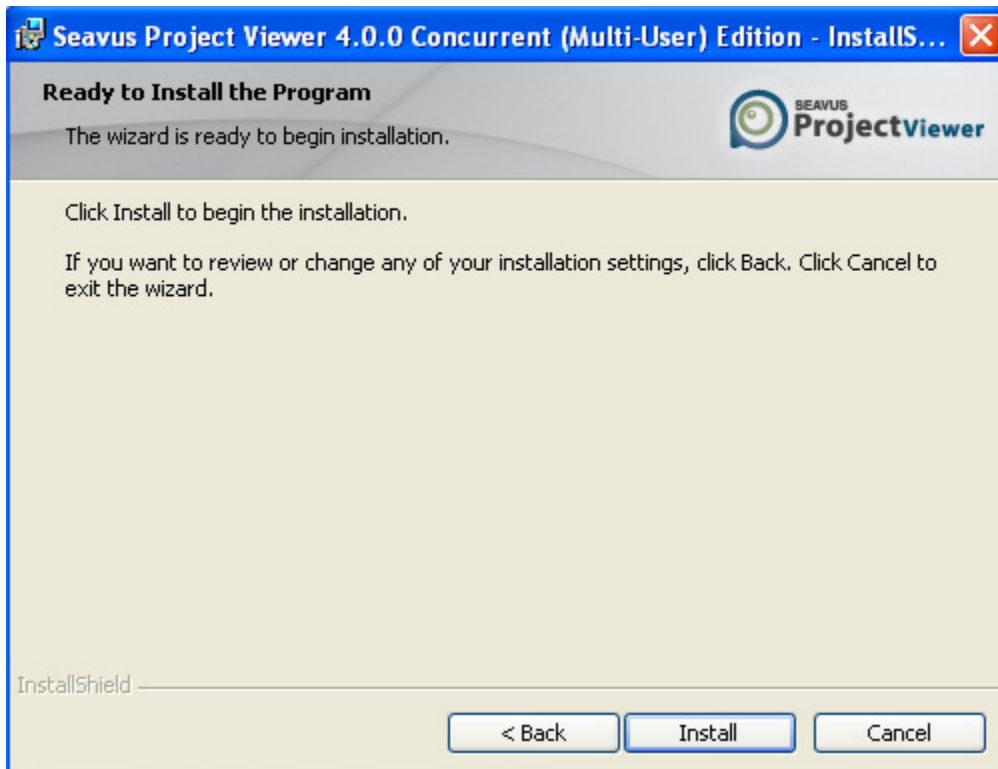
Depending upon your Company policy; you can install both the Excel or the Outlook plug-ins, or neither of them. Choosing the driver  symbol from  the drop-down menu, the selected plug-ins will be installed on the computer. Choosing the  symbol from the driver  drop-down menu, the selected plug-ins will not be installed on the computer.



Note: You can't disable the ODBC plug-in. It will be installed automatically.

STEP 11) READY TO INSTALL THE PROGRAM:

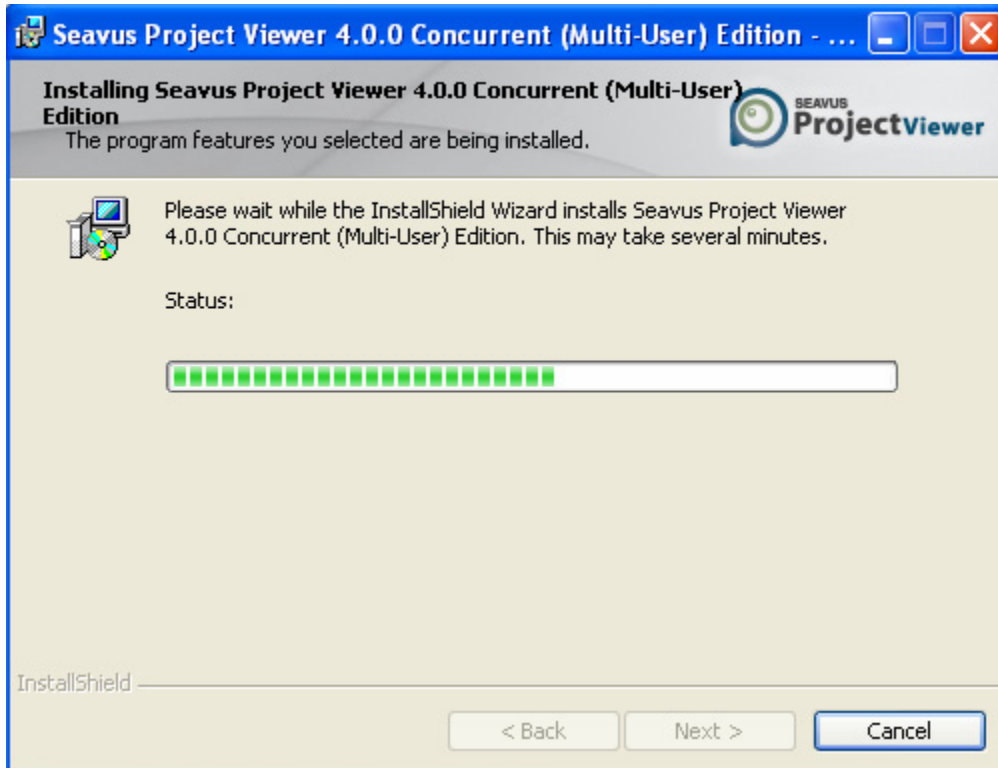
When you finish with all previous settings in the Setup screens, you are only a few steps from installing Seavus Project Viewer on your computer/server. If the settings are ok, you can click the Install button to start the installation.



STEP 12) INSTALLING THE PROGRAM:

Concurrent Version - Installation Instructions

After you have clicked the Install button, the installation of the product will start. Once the installation dialog appears; you have the option to stop the installation by clicking the Cancel button. Cancelling the installation process will rollback the installation and remove all the data related to this product.



STEP 13) SETUP COMPLETED:

Concurrent Version - Installation Instructions

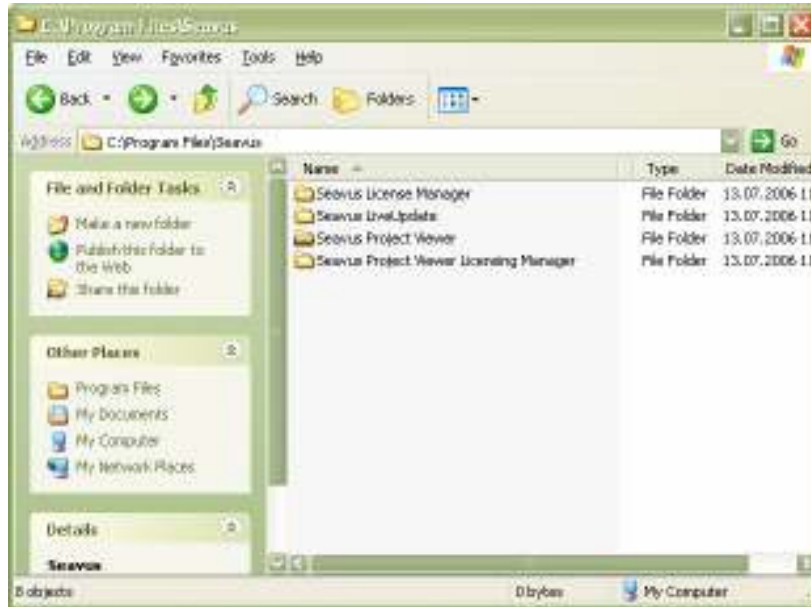
If the installation was successful; the Installation Completed dialog box will appear, telling you that the product is successfully installed on your computer/server. Click the Finish button, to complete the installation process.



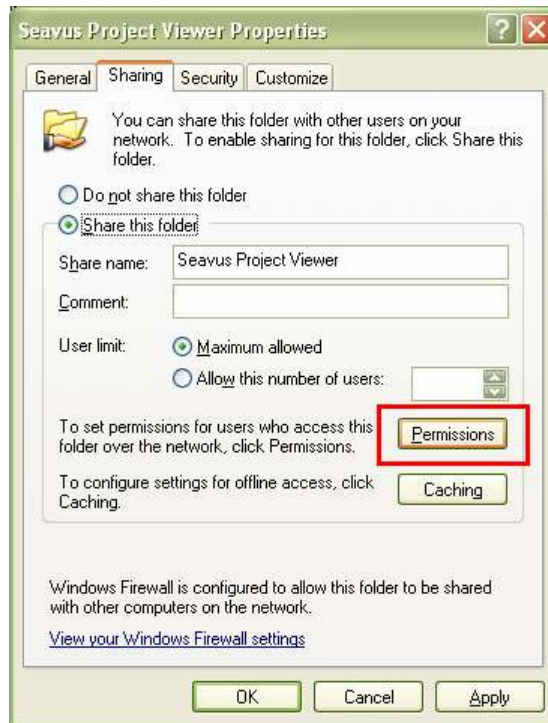
STEP 14) SHARE SEAVUS PROJECT VIEWER FOLDER:

Concurrent Version - Installation Instructions

After the installation is complete, find the folder where the Seavus Project Viewer is installed (by default it is C:\Program Files\Seavus\Seavus Project Viewer) and share this folder to the user group that you want to be able to use Seavus Project Viewer.

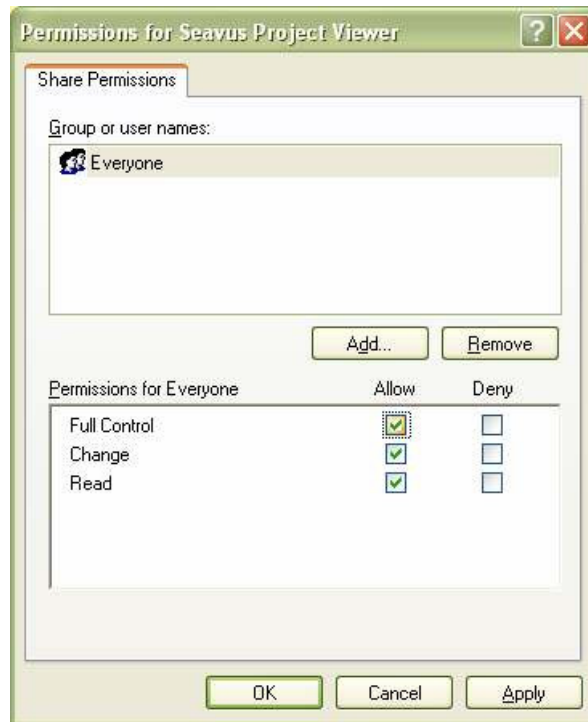


During the share process, you have to give permissions for using the Seavus Project Viewer folder. For that purpose, select the Sharing tab and click on the Permissions button.

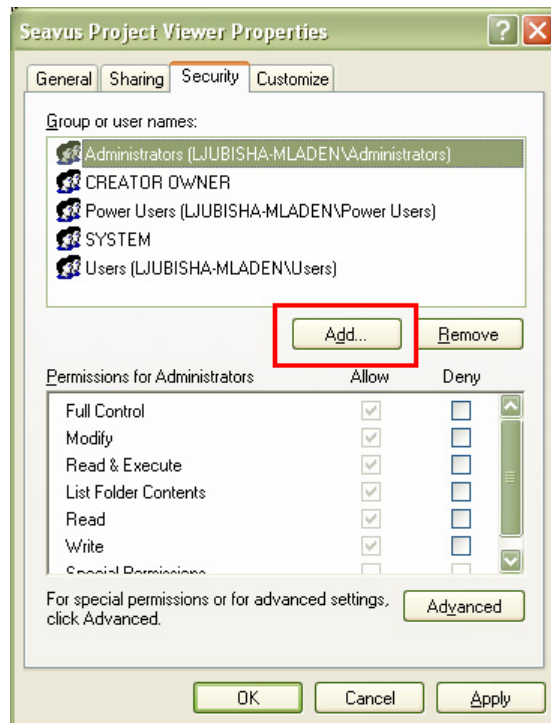


Select the 'Everyone' group inside the Groups and user name window and check all permissions

for everyone

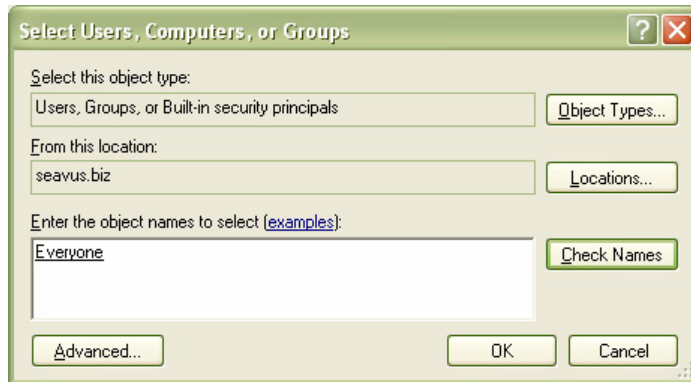


After performing this action, select the Security tab and click on the Add... button

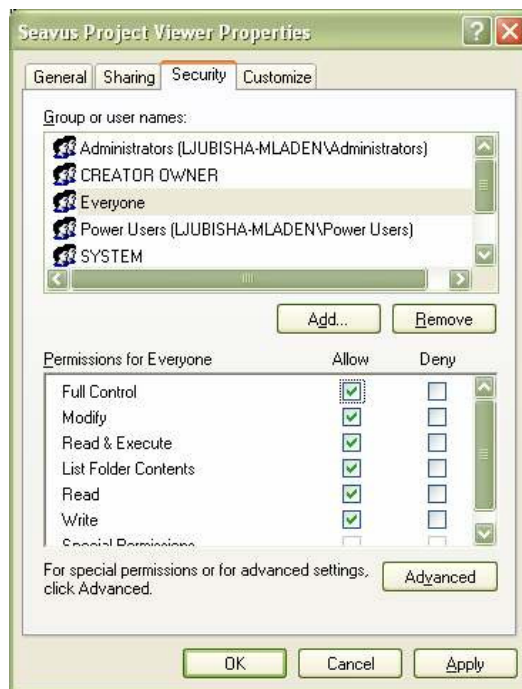


Enter the name Everyone and click on the Check Names button.

Concurrent Version - Installation Instructions

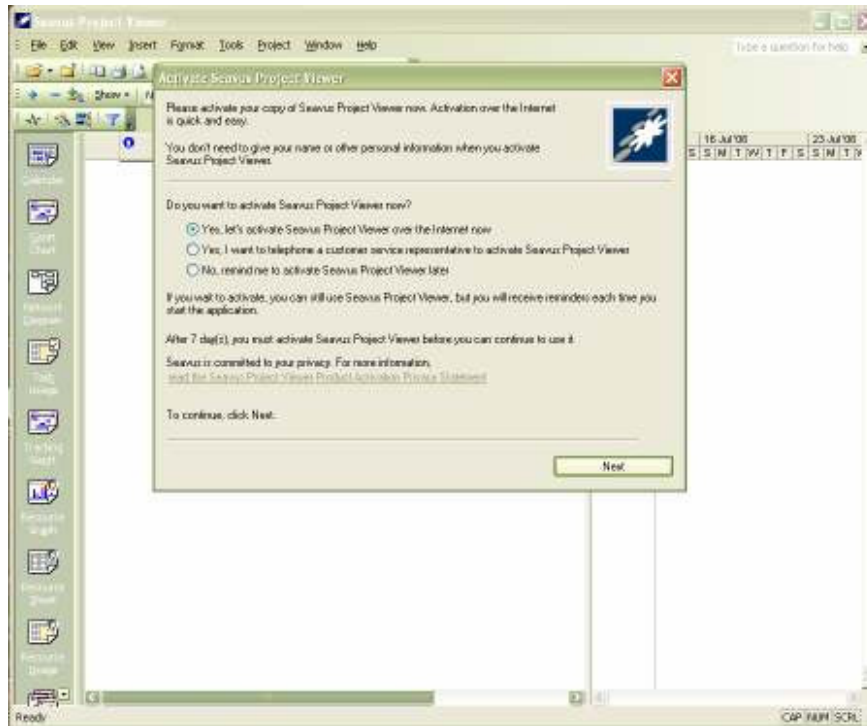


The 'Everyone' group will appear in the Group and user name window. Select it and 'allow permissions'



STEP 15) ACTIVATE SEAVUS PROJECT VIEWER:

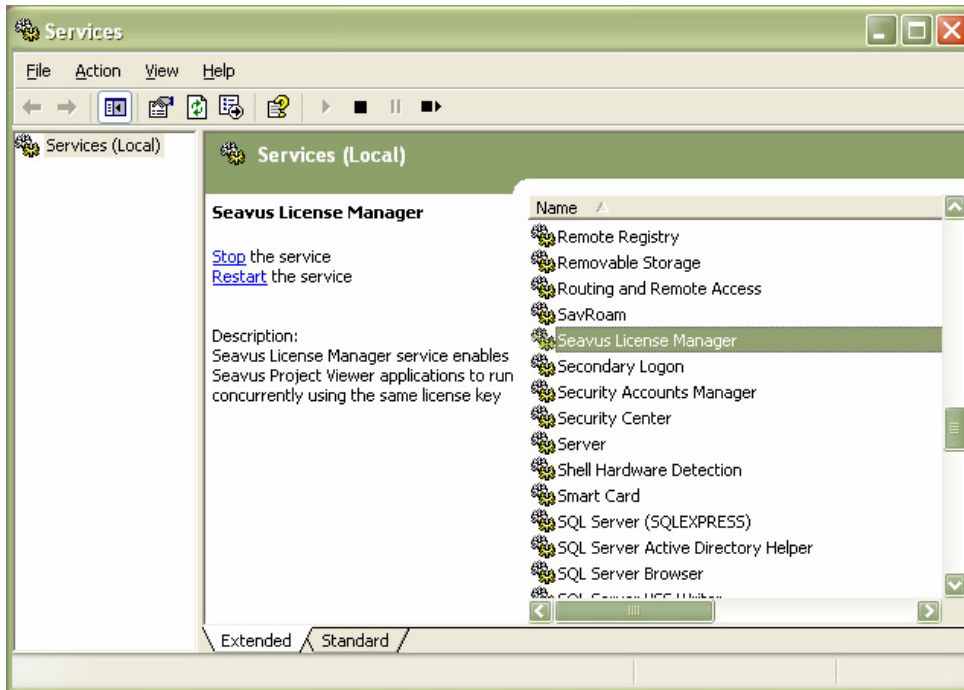
After replacing the IP address of the computer where the viewer is installed you can start the Seavus Project Viewer application (SeavusProjectViewer.exe) and finish the activation process.



Note: After you activate Seavus Project Viewer, close the application.

STEP 16) RESTART SEAVUS LICENSE MANAGER:

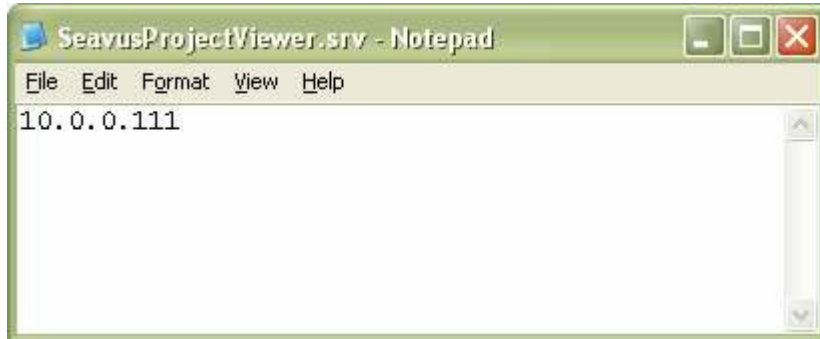
Restart the "Seavus License Manager" service (Start->Control Panel->Administrative Tools->Services)



Note: If the IP address on the server computer is changed, Seavus Project Viewer gives you

Concurrent Version - Installation Instructions

opportunity to replace the old IP address with the new one. For this purpose, go to the location where the application is installed and in the same folder open the file "SeavusProjectViewer.srv" (with Notepad) and replace the old IP address with the new IP address of the computer where the viewer is installed. Save the file so that the changes can be applied.



After changing the IP address you have to restart the "Seavus License Manager"

Now you are ready to use Seavus Project Viewer from N computers connected in the network with the computer where Seavus Project Viewer is installed, by starting the "SeavusProjectViewer.exe" file.

END