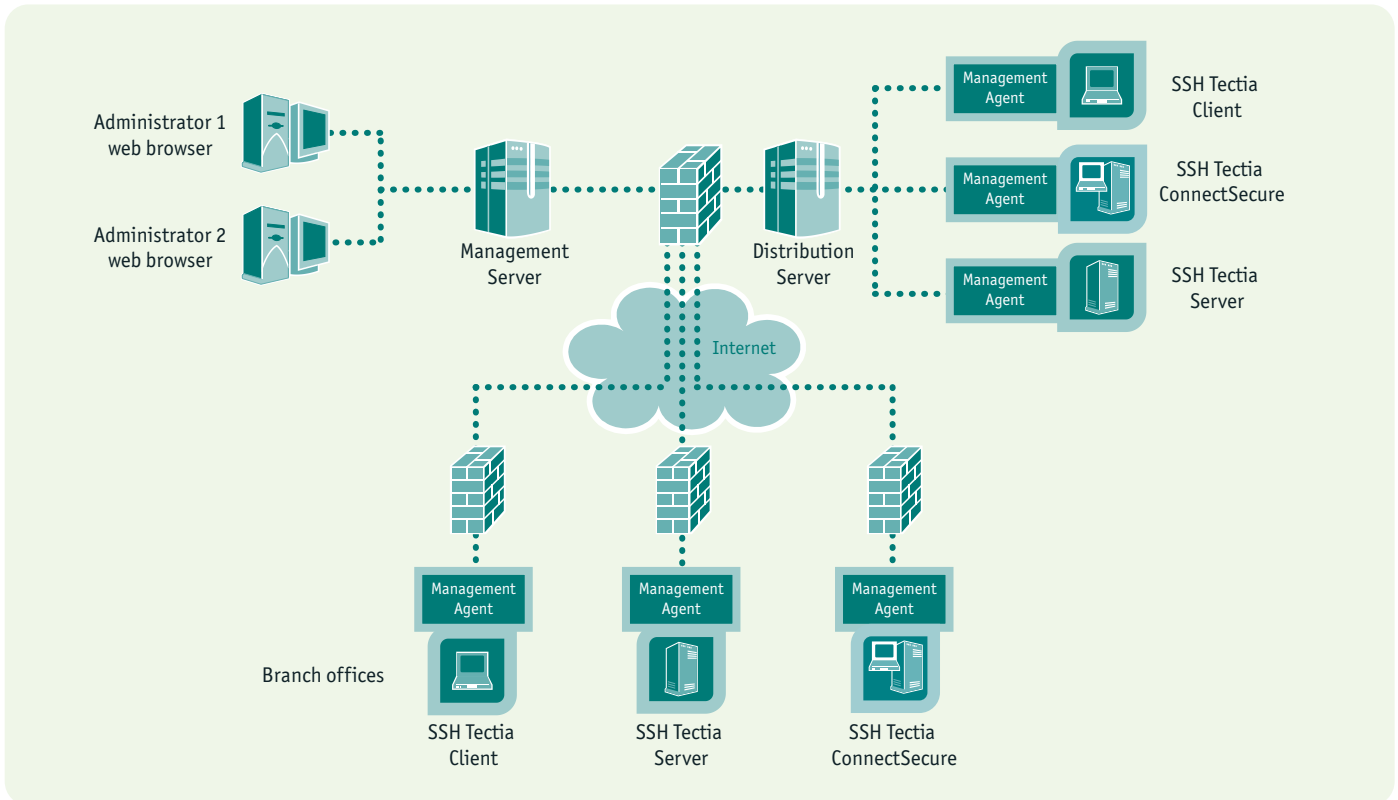




SSH Tectia® Manager 6.0 Security Systems Management



ENTERPRISE-CLASS MANAGEMENT FOR SSH TECTIA ENVIRONMENTS

SSH Tectia® Manager is an enterprise-class security system management platform that enables organizations to securely and cost-effectively manage the full lifecycle of the SSH Tectia environment. The SSH Tectia centralized management platform significantly reduces on-going operating costs and strengthens regulatory compliance, enabling enterprises to keep their mission-critical business systems secure and operational.

In today's environment with the increasing risks and threats, it is more important than ever to ensure that only authenticated and authorized users can access company computers, and that sensitive data is adequately protected while in transit. This calls for automation and increased control of key administration activities to ensure timeliness, responsiveness, and consistency rarely provided by manual processes.

SSH Tectia Manager provides centralized software deployment, configuration management, server host key management, log gathering and reporting capabilities for SSH Tectia products across multiple supported operating systems. SSH Tectia Manager is designed to enforce proven security practices, such as role-based security management, separation of duties and the least privilege principle. It provides administrators with a powerful graphical user interface for managing the SSH Tectia installation.

SCALABLE ARCHITECTURE

SSH Tectia Manager is built on a scalable architecture for deployment in complex enterprise networks with thousands of managed hosts

across multiple sites. The modular system is built upon a robust Management Database, which holds information about all managed objects. The built-in Certification Authority (CA) is a key component in the Management Server providing robust and automatic management of SSH Tectia Server keys and certificates. For improved responsiveness and reduced network load, Distribution Servers can be deployed at remote sites while providing the central administrator with a unified view of the full enterprise system.

REDUCED OPERATING COSTS

SSH Tectia Manager brings automation to key IT and security management processes, reducing the administrative overhead and operating costs associated with maintaining the security infrastructure. With SSH Tectia Manager, administrators can easily manage security policy updates, software updates, and other modifications to the managed objects, as well as compile reports for inventory and audit purposes.

BASED ON SSH'S EXTENSIVE SECURITY EXPERIENCE

SSH Tectia Manager has been designed by the original developer of the Secure Shell protocol, a widely deployed security solution for enterprises, government agencies and financial institutions. SSH has developed SSH Tectia Manager in close partnership with large enterprise customers to address the security needs of complex environments resulting in a powerful easy-to-use management system with a low Total Cost of Ownership (TCO).

Features

Software Deployment

- Transparent SSH Tectia software deployment and upgrades
- Software installation monitoring
- Software status monitoring and reporting

Configuration Management

- Centralized SSH Tectia software configuration management
- Centralized configuration of PKI settings
- Configuration deployment monitoring and reporting
- Configuration status monitoring and alerts

Centralized Key and Authentication Management

- Built-in Certification Authority (CA) for host identity management
- Centralized (server) host public key distribution
- Centralized configuration of PKI settings for the SSH Tectia client/server solution

Auditing, Reporting and Environment Monitoring

- Administrator audit trail logging
- Centralized SSH Tectia Server log gathering, viewing and reporting
- Logging and alert support to third-party monitoring systems
- Automatic detection of SSH Tectia and other Secure Shell products
- Flexible host grouping with multiple views and hierarchies
- Server and configuration status monitoring and alerts

High Security and Scalability

- Encrypted and authenticated secure management connections
- Encrypted and authenticated web-based administration interface
- Role-based administrator access management
- Host and configuration data stored in a built-in SQL database
- Distribution Server architecture for very large environments and high availability

Specifications

System Requirements

Management Server:

- 512 MB RAM (recommended minimum)
- 1 GB free disk space – up to 30 GB for log storage
- x86 or SPARC CPU

Managed host:

- 4 MB RAM used by Management Agent on Unix hosts
- 8 MB RAM used by Management Agent on Windows hosts
- 2 MB free disk space, 25 MB recommended

Database Support

- Built-in Management Database
- Oracle 9.2 and 10g

Management Connection

- TLS-encrypted and authenticated TCP/IP connection

Logs and Reports

- SSH Tectia administrator activity audit log
- SSH Tectia Manager system event log
- SSH Tectia Server logs
- Summary reports on managed host environment

Log Mechanisms

- Syslog on Unix
- Event log on Microsoft Windows
- Archival in Management Database

Host Certificate Management

- Centralized X.509 digital host certificate deployment and life-cycle management
- Deployment of CA certificates and PKI settings to managed hosts
- Certificate Revocation List publishing via HTTP
- Support for Entrust Authority™ Security Manager 7.1-7.2 as an external PKI

Supported Platforms

Management Server platforms:

- Red Hat Enterprise Linux 3, 4 ES/AS (x86)
- Sun Solaris 8, 9, 10 (SPARC)

Managed host platforms:

- HP-UX 11.0, 11iv1, 11iv2, 11iv3 (PA-RISC)
- HP-UX 11iv1.6, 11iv2, 11iv3 (IA64)
- IBM AIX 4.3.3, 5.1, 5.2, 5.3 (POWER)
- Microsoft Windows NT 4.0, 2000, XP, Server 2003, Server 2003 x64, Vista, Vista x64 (x86)
- Red Hat Linux 7.3, 8.0, 9 (x86)
- Red Hat Enterprise Linux 3, 4, 5, 5.1 (x86, x86-64)
- Sun Solaris 2.6, 7, 8, 9, 10 (SPARC)
- Sun Solaris 10 (x86-64)
- SUSE Linux 9.1, 9.2 Professional (x86)
- SUSE Linux Enterprise Server 9, 10 (x86, x86-64)
- SUSE Linux Enterprise Desktop 10 (x86, x86-64)

Supported SSH Software Versions

- SSH Tectia Client, Server, and Connector: Version 4.4.x, 5.1.0 and later
- SSH ConnectSecure: Version 6.0.0 and later

FINLAND

Valimotie 17
FI-00380 Helsinki
Tel: +358 20 500 7000
Fax: +358 20 500 7001
sales.fi@ssh.com
www.ssh.com

GERMANY

Lintorfer Str. 7
De-40878 Ratingen
Tel: +49 2102 30979 0
Fax: +49 2102 30979 20
sales.de@ssh.com
www.de.ssh.com

USA

20 William Street G35
Wellesley, MA 02481
Tel: +1 781 247 2100
Fax: +1 781 431 0864
sales.americas@ssh.com
www.ssh.com

JAPAN

sales.jp@ssh.com
www.ssh.com/jp/

UNITED KINGDOM

SoanePoint, 6–8 Market Place
Reading, Berkshire
RG1 2EG
Tel.: +44 (0) 1189 255 580
Fax: +44 (0) 1189 255 586
sales.uk@ssh.com
www.ssh.com

